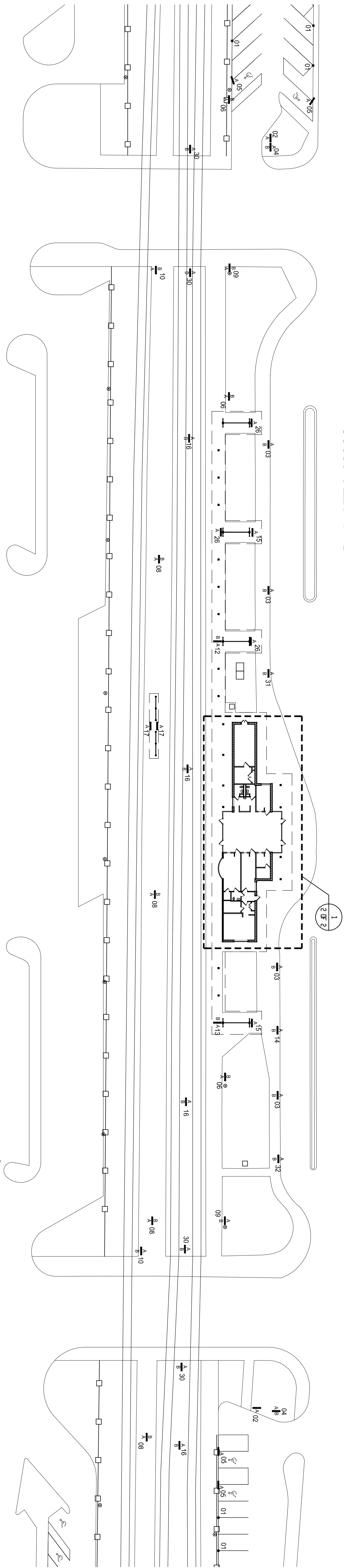
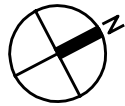


STATION LOT NO.



3 PLATFORM PLAN

SCALE: 1/32" = 1'-0"



| SIGN SCHEDULE | | | | | | | | | |
|---------------|-----------|---|---|----------------|----------|------------|---------------|---|----------------------------|
| KEY | SIGN TYPE | SIDE A | SIDE B (if applicable) | SIGN SIZE | QUANTITY | # OF SIDES | MOUNTING TYPE | MOUNTING HEIGHT | REMARK |
| 01 | P-3A | NUMBERS / NUMBERS | | 6' H X 12' W | 5 | 1 | POST | 46" FROM GRADE TO TOP OF SIGN | SEE # / 3 OF 3 FOR DETAILS |
| 02 | P-5C | ALL DAY PARKING PAY COIN BOX NEAR STATION S 1300 N. WILSON ST. RESERVED SPACES ONLY | | 24" H X 18" W | 2 | 1 | POST | 84" FROM GRADE TO BOTTOM OF SIGN | SEE # / 3 OF 3 FOR DETAILS |
| 03 | 7.5 | NO PARKING | NO PARKING | 18" H X 12" W | 4 | 2 | POST | 54" FROM GRADE TO BOTTOM OF SIGN | SEE # / 3 OF 3 FOR DETAILS |
| 04 | P-1B | DES PLAINES Parking → | DES PLAINES Parking ← | 31" H X 36" W | 2 | 2 | POST | 60" FROM GRADE TO TOP OF SIGN | SEE # / 3 OF 3 FOR DETAILS |
| 05 | P-7A | RESERVED PARKING \$500 FINE | | 18" H X 12" W | 4 | 1 | POST | 54" FROM GRADE TO BOTTOM OF SIGN | SEE # / 3 OF 3 FOR DETAILS |
| 06 | 2A | DES PLAINES PLATFORM 3 TO CHICAGO → | METRIA | 12" H X 72" W | 3 | 2 | POST | 72" FROM GRADE TO TOP OF SIGN | SEE # / 3 OF 3 FOR DETAILS |
| 07 | 2A | DES PLAINES PLATFORM 3 TO CHICAGO → | | 12" H X 72" W | 2 | 1 | FLUSH | 72" FROM GRADE TO TOP OF SIGN | SEE # / 3 OF 3 FOR DETAILS |
| 08 | 2A | DES PLAINES PLATFORM 1 FROM CHICAGO → | DES PLAINES PLATFORM 2 ← FROM CHICAGO | 12" H X 72" W | 4 | 2 | POST | 72" FROM GRADE TO TOP OF SIGN | SEE # / 3 OF 3 FOR DETAILS |
| 09 | 5.4 | → 12" H X 24" W ← 12" H X 24" W Chicago | ← 12" H X 24" W → 12" H X 24" W Chicago | 18" H X 24" W | 4 | 2 | PROJECT | 96" FROM GRADE TO BOTTOM OF SIGN | SEE # / 3 OF 3 FOR DETAILS |
| 10 | 5.5 | → From Chicago | ← From Chicago | 18" H X 24" W | 2 | 2 | PROJECT | 96" FROM GRADE TO BOTTOM OF SIGN | SEE # / 3 OF 3 FOR DETAILS |
| 11 | 4.16 | Acceptable Bounding | Acceptable Bounding | 24" H X 18" W | 2 | 2 | PROJECT | 96" FROM GRADE TO BOTTOM OF SIGN | SEE # / 3 OF 3 FOR DETAILS |
| 12 | 5.1 | → Bus Stop | ← Bus Stop | 18" H X 24" W | 1 | 2 | PROJECT | 96" FROM GRADE TO BOTTOM OF SIGN | SEE # / 3 OF 3 FOR DETAILS |
| 13 | 5.2 | → Taxi Stop | ← Taxi Stop | 18" H X 24" W | 1 | 2 | PROJECT | 96" FROM GRADE TO BOTTOM OF SIGN | SEE # / 3 OF 3 FOR DETAILS |
| 14 | 7.38 | Kiss N Ride | Kiss N Ride | 18H X 12" W | 1 | 2 | POST | 54" FROM GRADE TO BOTTOM OF SIGN | SEE # / 3 OF 3 FOR DETAILS |
| 15 | 5.6 | ↑ To Chicago | | 18" H X 24" W | 2 | 1 | FLUSH | 96" FROM GRADE TO BOTTOM OF SIGN | SEE # / 3 OF 3 FOR DETAILS |
| 16 | 10B | DANGER STA BEHIND YELLOW LINE UNTIL TRAIN STOPS | DANGER STA BEHIND YELLOW LINE UNTIL TRAIN STOPS | 9" H X 60" W | 4 | 2 | POST | VARIABLES APPROVED BY METRIA | SEE # / 3 OF 3 FOR DETAILS |
| 17 | 1E | Des Plaines | | 15" H X 132" W | 4 | 1 | ROOF MOUNT | VARIABLES APPROVED BY METRIA | SEE # / 3 OF 3 FOR DETAILS |
| 18 | 10a | DES PLAINES STATION | | 4.5" H X 9" W | 2 | 1 | FLUSH | 60" FROM GRADE TO UNDERSIDE OF 1ST LINE OF COPY | GRADE 2 RAILLINE |

| SIGN SCHEDULE | | | | | | | | | |
|---------------|-----------|---|------------------------|-------------------|----------|------------|--------------------|---|--------|
| KEY | SIGN TYPE | SIDE A | SIDE B (if applicable) | SIGN SIZE | QUANTITY | # OF SIGNS | MOUNTING TYPE | MOUNTING HEIGHT | REMARK |
| 19 | M-5 | Station Hours 4:30 AM - 5:00 PM Mon-Fri 8:00 AM - 5:00 PM Sat 12:00 PM - 5:00 PM Sun | | 4.5' H x 9' W | 2 | 1 | FLUSH | 66" FROM GRADE TO BOTTOM OF SIGN | |
| 20 | 8E | NO SMOKING INDOOR OR WITHIN 15 FT OF ENTRANCE | | 7' H x 5' W | 2 | 1 | GLASS MOUNTED DECK | 66" FROM GRADE TO TOP OF SIGN | |
| 21 | 6.4 | EMPLOYEES ONLY | | 12' H x 9' W | 3 | 1 | FLUSH | 96" FROM GRADE TO BOTTOM OF SIGN | |
| 22 | 6.5 | NO SMOKING | | 12' H x 9' W | 1 | 1 | FLUSH | 66" FROM GRADE TO UNDERLINE OF 1ST LINE OF COPY | |
| 23 | 6.10 | NO LOITERING | | 12' H x 9' W | 1 | 1 | FLUSH | 66" FROM GRADE TO UNDERLINE OF 1ST LINE OF COPY | |
| 24 | 6.2 | MEN | | 9' H x 9' W | 1 | 1 | FLUSH | 66" FROM GRADE TO UNDERLINE OF 1ST LINE OF COPY | |
| 25 | 6.1 | WOMEN | | 9' H x 9' W | 1 | 1 | FLUSH | 66" FROM GRADE TO UNDERLINE OF 1ST LINE OF COPY | |
| 26 | 3D | INFORMATION DISPLAY BOARD | | 22.5" H x 23.5" W | 4 | 1 | FLUSH | 66" FROM GRADE TO BOTTOM OF SIGN | |
| 27 | 3B | LARGE INFORMATION DISPLAY BOARD | | 48" H x 51" W | 1 | 1 | FLUSH | 84" FROM GRADE TO TOP OF SIGN | |
| 28 | 5.17 | Tickets | | 18" H x 24" W | 1 | 1 | FLUSH | 96" FROM GRADE TO BOTTOM OF SIGN | |
| 29 | 5.12 | Restrooms | | 18" H x 24" W | 2 | 2 | PROJECT | 96" FROM GRADE TO BOTTOM OF SIGN | |
| 30 | 10A | DO NOT CROSS TRACKS WHEN BELL IS RINGING OR RED LIGHTS ARE FLASHING | | 28" H x 27" W | 4 | 2 | POST | VARIABLE | |
| 31 | 7.1 | BUS | | 18" H x 12" W | 1 | 2 | POST | 54" FROM GRADE TO BOTTOM OF SIGN | |
| 32 | 7.2 | TAXI | | 18" H x 12" W | 1 | 2 | POST | 54" FROM GRADE TO BOTTOM OF SIGN | |

GENERAL NOTE:

1. FOR STATION PROJECTS ON THE U-24, U-24W, U-24NW, U-24NE, CONTRACTOR TO INSTALL ALL SIGNS, FOR STATION PROJECTS ON THE M-24, M-24W, S-24, RD. HC 4-262, CONTRACTOR TO INSTALL ALL SIGNS, EXCEPT PLATFORM SIGNS. ALL SIGNS TO BE INSTALLED PER THE M-24, PER THE "M-24" STATION SIGN PROGRAM SPECIFICATIONS - LATEST EDITION. ILLINOIS STANDARD SIGNS SHALL BE FURNISHED AND INSTALLED BY THE CONTRACTOR PER THE IDOT STANDARD SPECIFICATIONS FOR THE TRAFFIC CONTROL ITEMS AND PER STANDARD SPEC. 2020.6 AND 2020.6.

2. SIGN LOCATIONS SHOWN ARE APPROXIMATE ONLY; ACTUAL LOCATIONS TO BE DETERMINED IN THE FIELD BY METRA REPRESENTATIVES.

3. FOR ALL "METRA" TYPE SIGNS SEE THE "METRA STATION SIGN PROGRAM SPECIFICATIONS" LATEST EDITION.

4. CONTRACTORS SHALL SUBMIT SHOP DRAWINGS OF ALL SIGNS FOR METRA'S REVIEW BEFORE FABRICATING.

5. METRA RECOMMENDS THE FOLLOWING MANUFACTURERS FOR SIGN FABRICATION: DESIGN GROUP SIGNAGE CORP.: 847-399-0350, WESTERN REMAC INC.: 639-972-7770, ANDCO SIGNAGE: 800-476-8900.

[illegible]

| | |
|-------------------|----------------|
| BASE DATE: | |
| DRAWN | CHECKED |
| PE NO. | PM |

KEY:

##/##  SIGN DESIGNATION NUMBER
(MULTIPLE NUMBERS REPRESENT MULTIPLE SIGNS
AT THE SAME LOCATION)

SIGN POSITION

SIGN SIDE DESIGNATION

2 SIGN SCHEDULE

SCALE: NIS

KEY
SCALE: MTS

SCALE: NIS

| PLAN TITLE DES PLAINES TRAIN STATION WAYFINDING | CADD FILE NO. |
|---|---------------|
|---|---------------|

STATION NAME