

© 2006 ENGINEERED PLASTICS
 CONFIDENTIAL AND PROPRIETARY DOCUMENT
 ANY ONE OR MORE OF THE FOLLOWING
 PATENTS MAY APPLY
 U. S. PATENT NO. 5,303,669, 5,775,835,
 6,449,790, AND 6,895,622 B2
 C.D.N. PATENT NO. 2,032,532, 2,070,984
 US PATENTS PENDING.
 © KENNETH E. SZEKELY


MATERIAL LIST

ITEM	DESCRIPTION	PART NO.	QTY

REFERENCE DRAWINGS

DWG. NO.	DESCRIPTION
ADG-249606	STANDARD PANEL
ADG-368806	END RETURN PANEL

2	12/18/06	HOLE DIAMETER CHANGE-ANGLE	JLD	
1	06/14/06	GENERAL REVISION	JLD	
NO.	DATE	REVISION	APPR.	

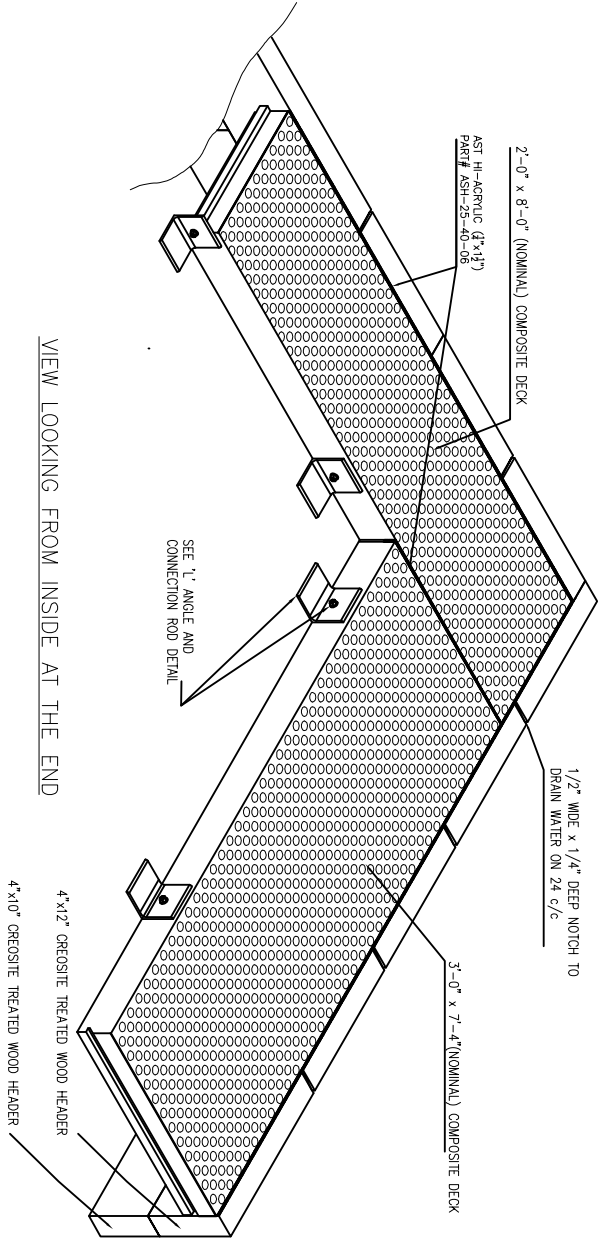
SCALE	AS NOTED
	

TRADE	PART NO.
STRUCTURAL COMPOSITE	SEE MATERIAL LIST
MATERIAL	VITRIFIED POLYMER COMPOSITE

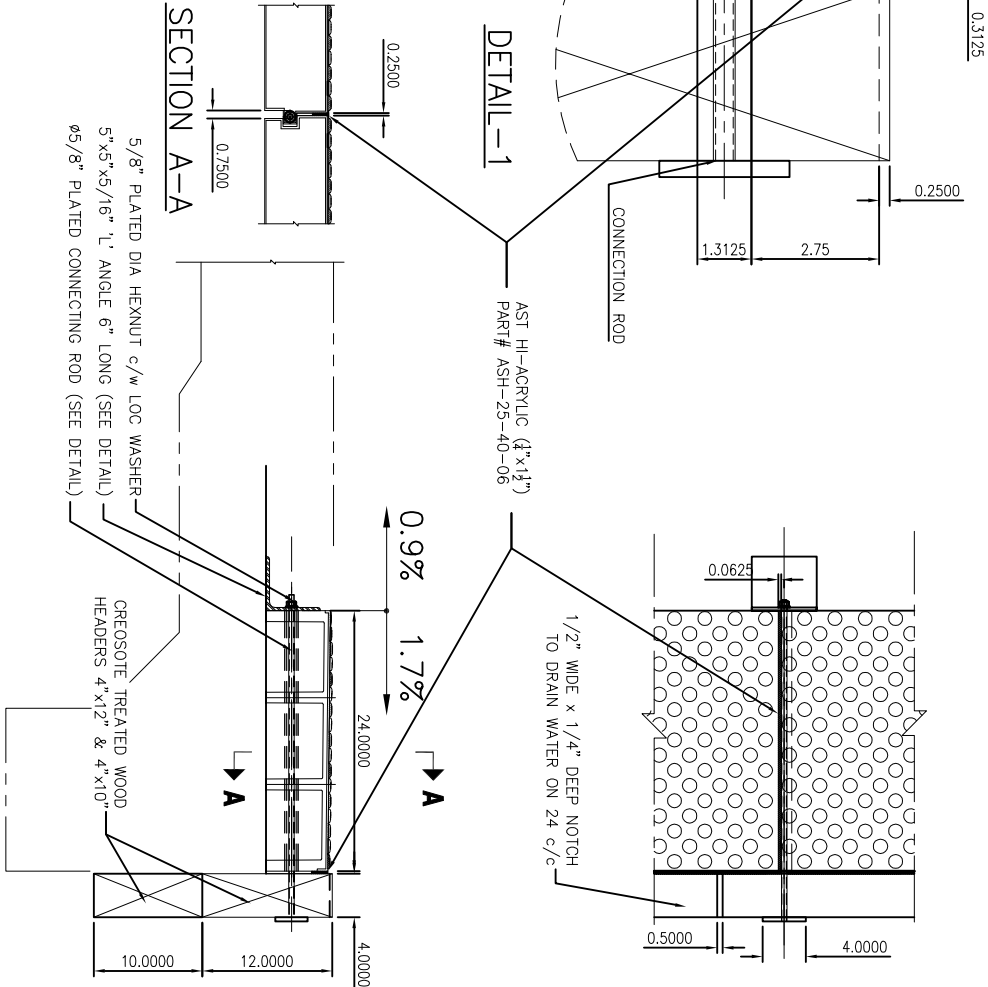
SUBJECT
Armor-Deck
 STRUCTURAL COMPOSITE PLATFORM PANEL
 WITH ARMOR-TILE DETECTABLE
 WARNING SURFACE SYSTEM

PROJECT
 2'-0" AND 3'-0" ABUTMENT
 TYPICAL JOINT BETWEEN
 ARMOR-DECK
 AND ACCESSORIES

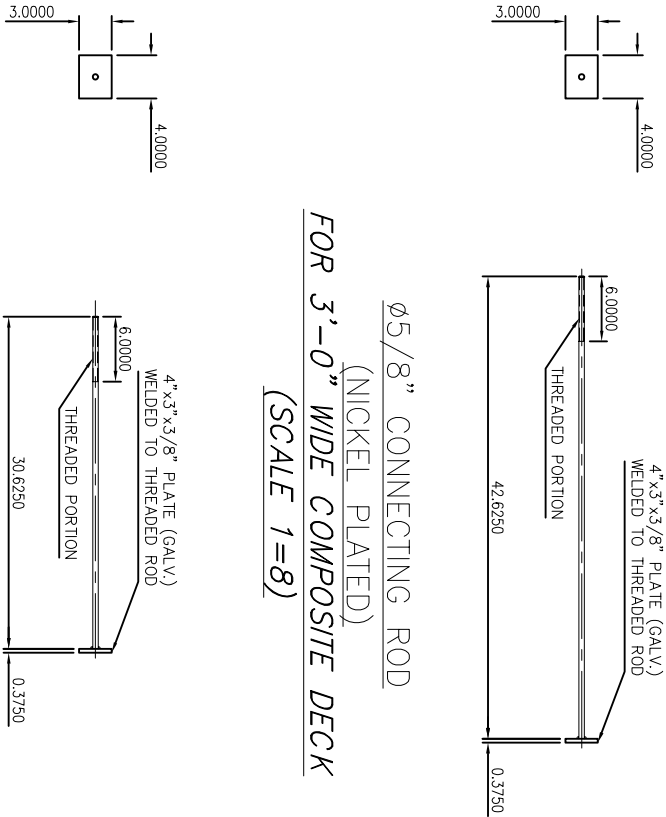
DRAWING NO.	ADG-D01	SHT. NO.	01	REV. NO.	2
-------------	---------	----------	----	----------	---



VIEW LOOKING FROM INSIDE AT THE END

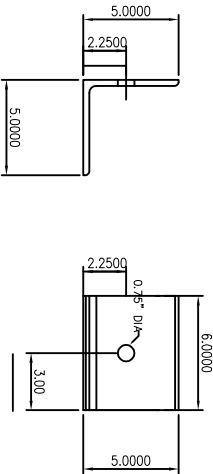
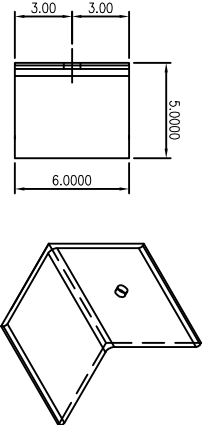


SECTION THROUGH THE JOINT (SCALE 1=8)



Ø5/8" CONNECTING ROD
 (NICKEL PLATED)
 FOR 3'-0" WIDE COMPOSITE DECK
 (SCALE 1=8)

Ø5/8" CONNECTING ROD
 (NICKEL PLATED)
 FOR 2'-0" WIDE COMPOSITE DECK
 (SCALE 1=8)



5"x5"x5/16" 'L' ANGLE (GALV.)
 FOR CONNECTION
 (SCALE 1=4)

CROSSING CONFIGURATION PLAN VIEW

