

CTA First Bus/Last Bus Times: This chart shows approximate first and last bus times between Union Station and downtown in the direction Metra riders are most likely to travel. Routes marked with an * extend beyond this area. Buses run every 7 to 15 minutes. All CTA buses are accessible.

ROUTE	WEEKDAYS	SATURDAYS	SUNDAY/HOLIDAYS
1 Indiana-Hyde Park* To Michigan/Cermak From Michigan/Cermak	6:25am-9:30am 2:30pm-6:50pm 5:55am-9:20am 1:55pm-6:20pm	No Service	No Service
19 United Center Express To/From United Center	For Bulls and Blackhawks games and all concerts, every 10 minutes. To United Center; starts 90 minutes before event; last bus leaves 10 minutes after event starts. Frequent service for 1 hour after events.		
60 Blue Island/26th* To/From downtown and UIC	All times	All times	All times
121 Union/Wacker Express To Navy Pier From Navy Pier	6:40am-9:15am 4:05pm-5:50pm 6:20am-9:35am 3:55pm-6:15pm	No Service	No Service
123 Illinois Center/Union Express To Wacker/Columbus From Wacker/Columbus	6:35am-9:10am 3:40pm-6:10pm 6:45am-9:25am 3:25pm-6:25pm	No Service	No Service
124 Navy Pier To Navy Pier From Navy Pier	From late June through Labor Day, runs until 11:30pm from Union Station and until midnight from Navy Pier 8:30am-10:00pm 8:30am-10:30pm	8:30am-10:10pm 9:00am-10:30pm	8:40am-10:10pm 9:00am-10:30pm
125 Water Tower Express To Chestnut/Mies Van der Rohe From Chestnut/Mies Van der Rohe	6:15am-9:35am 2:40pm-6:50pm 6:40am-10:05am 2:35pm-7:20pm	No Service	No Service
126 Jackson* To Michigan/Congress From Michigan/Congress	5:05am-12:35am 5:25am-12:55pm	5:50am-11:35pm 6:10am-11:55pm	6:05am-11:35pm 6:25am-11:50pm
128 Soldier Field Express To/From Soldier Field for Bears games only	Board eastbound on Jackson at Canal. Buses every few minutes starting 2 hours before game time until 30 minutes after kickoff. After the game, board on McFetridge; every few minutes for one hour. Special \$1.00 fare.		
129 West Loop/South Loop To McCormick Place From McCormick Place)	6:55am-9:30am 3:25pm-5:55pm 6:40am-8:55am 3:45pm-5:30pm		
130 Museum Campus To Museum Campus From Museum Campus	Runs daily Memorial Day weekend through Labor Day only. 9:30am-5:20pm 10:00am-6:00pm	9:30am-5:30pm 10:00am-6:00pm	9:30am-5:30pm 10:00am-6:00pm
151 Sheridan* To/From State St., N. Michigan Ave., Zoo, North Side	All times	All times	All times
156 LaSalle* To Lincon Park (Fullerton/Stockton) From Lincon Park (Fullerton/Stockton)	6:40am-9:00am 5:20am-7:35pm	No Service	No Service
157 Streeterville* To Lake Shore/Chestnut From Lake Shore/Chestnut	5:55am-6:35pm 6:30am-7:15pm	No Service	No Service
192 U of C Hospitals Express Between Union Station and University of Chicago Hospitals	6:30am-9:00am (S/B) 3:45pm-7:00pm (N/B)	No Service	No Service



metrarail.com

TICKET INFORMATION

Monthly Pass: Save over 30%. Good for unlimited travel between the fare zones indicated on the ticket during a calendar month. The pass is for the exclusive use of the purchaser and is not transferable.

10-Ride Ticket: Occasional commuters or recreational travelers save 15% off one-way fares. One 10-Ride can be shared by people riding together. Ticket is valid one year from date of purchase.

One Way Ticket: Good for one-way travel between the fare zones indicated on the ticket. Valid for one year from date of purchase.

\$5 Weekend Pass: Offers unlimited rides on both Saturday and Sunday.

Pace PlusBus: Monthly pass holders can purchase a Pace PlusBus sticker for unlimited travel on all Pace suburban buses. Pace buses connect with Metra trains at many stations.

Link-Up: Monthly pass holders can purchase a Link-Up sticker for connecting travel on CTA and Pace buses. CTA usage is restricted to A.M. and P.M. weekday rush hours.

Family Fares: Allow up to 3 children age 11 and under to ride **FREE** with a fare-paying adult on weekends and holidays.

Young Adult Fares: On weekends and holidays, youngsters 12 to 17 years of age ride for half fare.

Children's Weekday Fares: Allow children 6 and under to ride free when accompanied by a fare-paying adult (up to 3 children free per adult); children 7-11 save 50% over one-way fares.

Seniors Ride Free Program: Senior Citizens, 65 or older and living in the six-county region of Cook, DuPage, Kane, Lake, McHenry or Will are eligible to ride free by presenting their RTA-issued Reduced Fare Permit to the on-board personnel.

Disability/Senior Citizen Fares: Customers with Disabilities who have an RTA-issued Reduced Fare Permit are eligible for a reduced fare ticket. If you are enrolled in the Illinois Circuit Breaker Program and have a RTA Issued Circuit Permit, you are eligible to ride free. Seniors, who are ineligible for the Seniors Ride Free Program due to residency restrictions are still eligible for a reduced fare by presenting their Reduced Fare Permit or Medicare Card.

Printing paid for in part by Chase



For complete fare and schedule information, please call (312) 836-7000. All fares are subject to change.



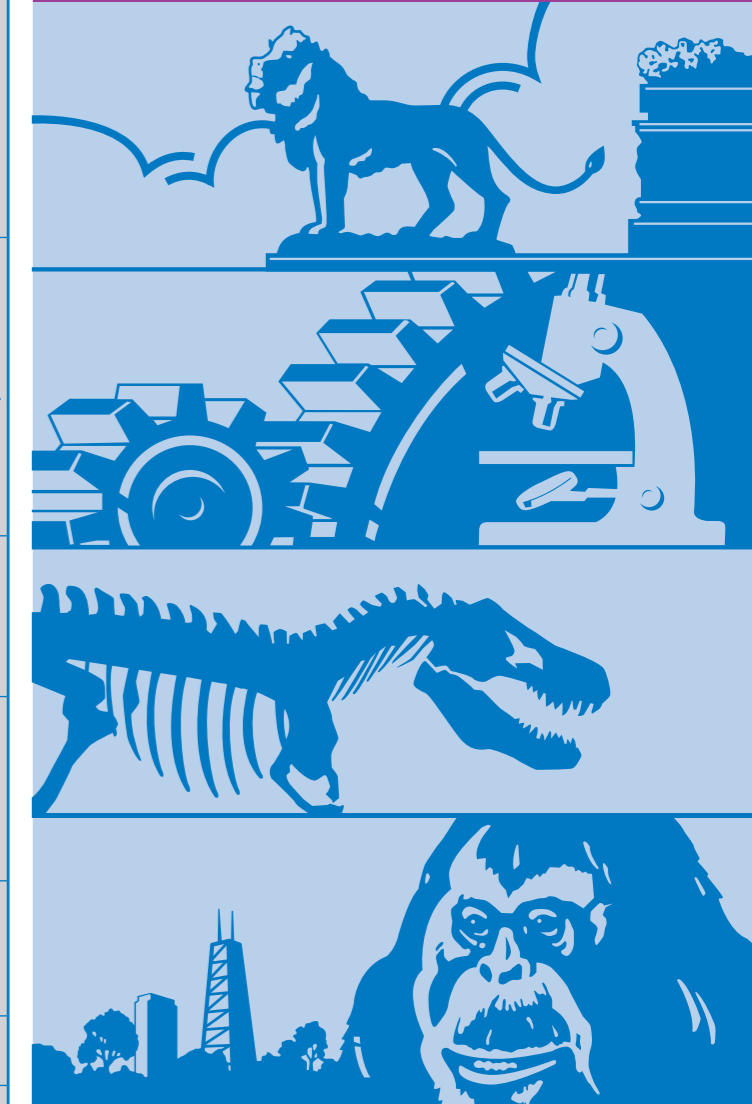
transitchicago.com

TYPE OF FARE*	FULL	REDUCED*
CASH FARE: Accepted on buses only. Exact fare (both coins and bills accepted). No cash transfers available.	\$2.25	\$1
CHICAGO CARD® AND CHICAGO CARD PLUS®: Buy Chicago Card and Chicago Card Plus online at chicago-card.com . Call 1-888-YOUR-CTA (1-888-968-7282); TTY: 1-888-CTA-TTY1 (1-888-282-8891) for more information. Chicago Card and Chicago Card Plus cards are valid on CTA and Pace. Transfers must occur within two hours of first ride. A \$5 purchase fee applies. The fee is waived for first-time users who register their cards.	Deducts 1st ride \$2 (Bus) \$2.25 (Rail) 1st transfer 25c 2nd transfer FREE	---
TRANSIT CARD: Deducts fares and transfers on CTA and Pace. Transfers must occur within two hours of first ride. Can pay for up to 7 full-fare rides at once. Add value at rail station farecard machines. Maximum card value is \$100. Buy full-fare Transit Cards (\$2 to \$100) at rail station farecard machines. Buy pre-valued, full-fare Transit Cards at select Currency Exchanges, Jewel and Dominick's food stores, CVS Pharmacies, and at transitchicago.com for \$10 or \$20.	Deducts 1st ride \$2 (Bus) \$2.25 (Rail) 1st transfer 25c 2nd transfer FREE	Deducts 1st ride 85c (Bus) 85c (Rail) 1st transfer 15c 2nd transfer FREE
REDUCED FARE TRANSIT CARD PACKS: Buy at select Currency Exchanges, Jewel and Dominick's food stores, CVS Pharmacies, and at transitchicago.com . Add value at station farecard machines.	---	2-Pack \$15.30
PASSES: Offer unlimited rides when activated with first use. Buy at select Currency Exchanges, Jewel and Dominick's food stores, CVS Pharmacies, and at transitchicago.com . Cannot be shared or recharged. 30-day passes are valid on CTA and Pace.	\$5.75 (1-day) \$14 (3-day) \$23 (7-day) \$28 (7-day)** \$86 (30-day)	Only customers with disabilities \$35 (30-day)
LINK-UP PASS (STICKER OR FARECARD AVAILABLE): Valid weekdays on CTA (6 a.m.-9:30 a.m., and 3:30 p.m.-7 p.m.) and on Pace (any time). Sold by Metra; use with Metra monthly ticket.	\$39	---
128 SOLDIER FIELD EXPRESS	\$1 (dollar bill or coins only)	50c
154 WRIGLEY FIELD EXPRESS	\$6 per carload, including round-trip bus & parking	

* CTA farecards and passes can also be purchased in person at the CTA Sales Center, 567 W. Lake (Chicago), 2nd floor.

** 7-Day CTA/Pace Pass valid on CTA and Pace non-premium/subscription routes.

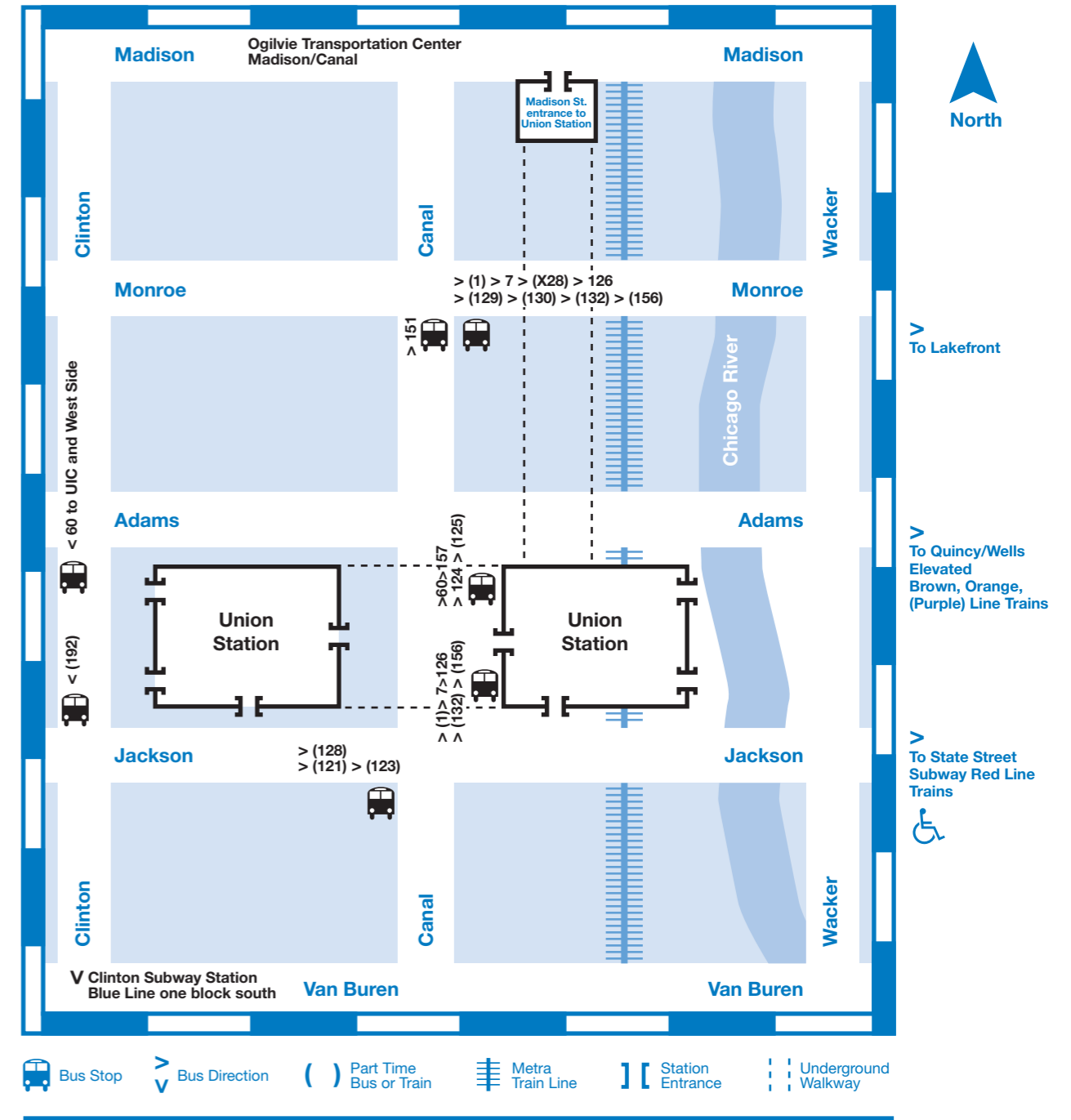
YOU HAVE CONNECTIONS IN CHICAGO
Union Station Travel Guide



This brochure shows CTA bus and train connections from Metra's Union Station to major destinations. Directions can be used daily, unless noted. Services run every 5 to 15 minutes. See time chart for approximate service hours. All CTA buses are accessible. ♿

ATTRACTION	DIRECTIONS
Adler Planetarium	Daily Memorial Day through Labor Day: 130 east on Monroe at Canal. Daily (year-round) 1, 7, 60, or 126 north on Canal between Jackson and Adams; exit at State, then 146 south on State.
Art Institute	1, 7, or 126 north on Canal between Jackson and Adams exit at Wabash. Walk 1 block east and 1 block north.
Briar St. Theater's Blue Man Group	Walk 3 blocks east on Adams to Wells; board the Brown Line or Purple Line elevated train to Belmont; walk 2 blocks east on Belmont to Halsted.
Chicago Board of Trade/Chicago Board Options Exchange	1, 7, or 126 north on Canal between Jackson and Adams; exit at Financial Place.
Chicago Cultural Center/Visitor Information Center	60 north on Canal at Adams, or 151 north on Canal at Monroe; exit at Wabash.
Chicago History Museum	151 north on Canal at Monroe; exit at LaSalle/Stockton, then walk one block south.
Chicago-Kent College of Law (IIT)	Exit Union Station on Clinton; walk 1 block west on Adams
Chicago Mercantile Exchange	Exit Union Station on Madison; walk 1 block east (across river).
Chicago Stock Exchange	1, 7, or 126 north on Canal between Jackson and Adams; exit at Financial Place; walk 1 block south.
City Hall/County Building	60 or 157 north on Canal at Adams exit at LaSalle.
Civic Opera House	Exit Union Station on Madison, walk 1 block east (across river).
Columbia College	1, 7, or 126 north on Canal between Jackson and Adams; exit at Harrison.
Daley Center	60 or 157 north on Canal at Adams; exit at Dearborn.
DePaul University (downtown)	1, 7, or 126 north on Canal between Jackson and Adams; exit at State.
Federal Buildings	1, 7, or 126 north on Canal between Jackson and Adams; exit at Dearborn.
Field Museum of Natural History	Daily Memorial Day weekend through Labor Day: 130 east on Monroe at Canal. Daily (year-round) 1, 7, 60, or 126 north on Canal between Jackson and Adams; then 146 south on State.
Grant Park Festivals/Taste of Chicago	1, 7, or 126 north on Canal between Jackson and Adams.
Greyhound Bus Station	7, 60, or 125 south on Clinton at Adams.
Harold Washington Library	1, 7, or 126 north on Canal between Jackson and Adams exit at State walk 1 block south. Exit at Jefferson.
Harris Music & Dance Theater	60 north on Canal at Adams; exit at Randolph/Stetson.
Illinois Center Area	151 north on Canal at Monroe; exit at South Water.
John Hancock Center	151 north on Canal at Monroe; exit at Michigan/Chestnut.
John Marshall Law School	1, 7, or 126 north on Canal between Jackson and Adams; exit at State.
LaSalle Street Metra Station	1, 7, or 126 north on Canal between Jackson and Adams. Exit at Financial Place walk 1 block south.
Lincoln Park Zoo/Conservatory	151 north on Canal at Monroe; exit at Stockton/Webster.
Loyola University (downtown)	151 north on Canal at Monroe; exit at Michigan/Chestnut.
McCormick Place	1, 7, or 126 north on Canal between Jackson and Adams to Michigan/Van Buren then 3 or X3 south on Michigan. Exit at 23rd.
Merchandise Mart	Weekday rush hours: 125 north on Canal between Jackson and Adams; exit at Orleans/Merchandise Mart. Daily: 124 north on Canal at Adams. Exit at Wacker/Wells; walk 1 block north (across river).
Michigan Ave. Shopping	151 north on Canal at Monroe.

ATTRACTION	DIRECTIONS
Midway Airport	126 north on Canal. Exit at Wabash. Walk 1 block north to Adams/Wabash elevated station. Board Orange Line train (inner loop) to Midway.
Millennium Park Concerts	60 north on Canal at Adams; exit at Randolph/Stetson.
Museum of Contemporary Art	Weekdays: 157 north on Canal; exit at Chicago/Mies van der Rohe. All times: 151 north on Canal at Monroe; exit at Chicago Ave. Walk one block east.
Museum of Contemporary Photography	1, 7, or 126 north on Canal. Exit at Harrison.
Museum of Science of Industry	1, 7, 60, 126 or 157 north on Canal between Jackson and Adams. Exit at State, then 6 or 10 south on State; exit at 56th or Museum.
Nature Museum	151 north on Canal at Monroe; exit at Fullerton. Walk one block east.
Navy Pier/Skyline Stage/Shakespeare Theater/Chicago Children's Museum	Weekday rush hours: 121 east on Jackson at Canal. Daily: 124 north on Canal at Adams.
Newberry Research Library	1, 7, 60, 126, or 157 north on Canal between Jackson and Adams exit at Dearborn. 22 or 36 north; exit at Walton. (From 36 walk one block west.)
Northwestern Memorial Hospital/Northwestern University (downtown)	Weekdays: 125 or 157 north on Canal near Adams. Daily: 151 north on Canal at Monroe, exit at Huron. Walk one block east.
Ogilvie Transportation Center (Metra Station)	Walk 2 blocks north on Canal or use Madison St. exit.
Randolph St. Theater District	60 or 157 north on Canal at Adams; exit at Dearborn.
River North Entertainment Area	1,7,60,126 or 157 north on Canal at Adams; exit at Dearborn. 22 or 36 north on Dearborn.
Robert Morris University	1,7, or 126 north on Canal between Jackson and Adams; exit at State. Walk 2 blocks south.
Roosevelt University	1,7,126, or 129 north on Canal between Jackson and Adams; exit at Congress.
Shedd Aquarium/Oceanarium	Daily Memorial Day weekend through Labor Day: 130 east on Monroe at Canal. Daily (year-round) 1, 7, 60, or 126 north on Canal between Jackson and Adams. Exit at State, then 146 south on State.
Sightseeing Boats	151 north on Canal at Monroe. Exit at Tribune Tower boats are on lower level.
Soldier Field	Bears game only: 128 east on Jackson at Canal. Daily: See directions Field Museum.
State of Illinois (Thompson) Center	60 or 157 north on Canal at Adams exit at LaSalle; walk 1 block north.
State Street Shopping	60 or 157 north on Canal at Adams or 151 north on Canal at Monroe; exit at State.
Symphony Center	1,7, or 126 north on Canal at Adams exit at Wabash. Walk 1 block east to Michigan and 1 block north.
United Center	Use Madison exit. 19 or 20 on Madison in front of Ogilvie Transportation Center.
U of C Gleacher Center	151 north on Canal at Monroe; exit at Tribune Tower.
U.S. Cellular Field	1, 7, 60, 126 or 157 north on Canal between Jackson and Adams. Exit at State then Red Line subway train (under State) marked "95th/Dan Ryan" to Sox-35th station.
Van Buren St. Metra Station	1,7, or 126 north on Canal between Jackson and Adams; exit at Van Buren.
Water Tower Place/Chicago Waterworks Visitor Info Center	151 north on Canal at Monroe; exit at Chestnut.
Willis (Sears) Tower	Walk 1 block (across river) east on Adams or Jackson.
Wrigley Field	1,7,60,126, or 157 north on Canal at Adams. Exit at State then Red Line subway train (under state) marked "Howard." Exit at Addison station.



- **Blue Line** trains (Dearborn Street subway) and **Red Line** trains (State Street subway) run at all times
- **Brown Line** trains (Quincy/Wells elevated) run weekdays/Saturdays 5:00am–1:00am; Sundays/holidays 7:15am–12:15am
- **Orange Line** trains (Quincy/Wells elevated) run weekdays 4:20am–1:15am; Saturdays 4:50am–1:15am; Sundays/holidays 5:50am–11:50pm
- **Purple Line Express** trains (Quincy/Wells elevated) run weekdays 6:10am–10:15am and 3:20pm–7:15pm

TRANSIT CARDS ARE AVAILABLE FROM THE CTA VENDING MACHINES LOCATED IN THE METRA TICKET OFFICE