


CTA First Bus/Last Bus Times: This chart shows approximate first and last bus times between the LaSalle Street station and downtown in the direction Metra riders are most likely to travel. Routes marked with an * extend beyond this area. Buses run every 7 to 15 minutes. All CTA buses are accessible. 

ROUTE	WEEKDAYS	SATURDAYS	SUNDAY/HOLIDAYS
1 Indiana-Hyde Park* To Michigan/Cermak From Michigan/Cermak	6:25am-9:30am 2:30pm-6:50pm 5:55am-9:20am 1:55pm-6:20pm	No Service	No Service
7 Harrison* To Michigan/Congress From Michigan/Congress RS To Illinois Medical District/West Side From Illinois Medical District/West Side	5:45am-9:40am 6:10pm-10:15am 6:15am-10:20am 5:40am-9:30pm	No Service	No Service
22 Clark* To/From Clark/Fullerton	All times	All times	All times
X28 Stony Island Express To 11th/Columbus (Museum Campus) From 11th/Columbus (Museum Campus)	6:35am-10:05am 2:55pm-7:30pm 6:10am-9:40am 2:15pm-6:50pm	No Service	No Service
36 Broadway* To Clark/Fullerton From Clark/Fullerton	5:00am-1:30am 4:25am-12:40am	5:05am-1:30am 4:25am-12:40am	5:00am-1:30am 4:25am-12:30am
60 Blue Island/26th* To/From Downtown & West Side	All times	All times	All times
126 Jackson* To Michigan/Harrison From Michigan/Harrison To Illinois Medical District/West Side From Illinois Medical District/West Side	5:05am-12:35am 5:25am-12:55am 5:30am-1:00am 4:55am-12:30am	5:50am-11:35pm 6:10am-11:55pm 6:15am-12:00pm 5:45am-11:30pm	6:05am-11:35pm 6:25am-11:50pm 6:30am-12:00pm 5:55am-11:25pm
129 West Loop/South Loop* To McCormick Place From McCormick Place RS	7:05am-9:40am 3:25pm-6:05pm 6:40am-8:55am 3:45pm-5:30pm	No Service	No Service
130 Museum Campus To Museum Campus From Museum Campus	Runs daily Memorial Day weekend through Labor Day only. 9:35am-5:30pm 10:00am-6:00pm	9:35am-5:35pm 10:00am-6:00pm	9:35am-5:30pm 10:00am-6:00pm
146 Inner Drive/Michigan Express* To Museum Campus From Museum Campus	NOTE: Service between North Michigan Ave. and State St. until midnight daily 5:50am-12:00m 6:50am-12:20am	6:40am-12:00m 7:00am-12:20am	6:40am-11:55pm 7:00am-12:20am
151 Sheridan* To/From State St., N. Michigan Ave., Zoo, North Side RS	All times	All times	All times
156 LaSalle* To Belmont/Halsted From Belmont/Halsted RS	6:05am-8:05pm 5:10am-8:35pm	No Service	No Service



metrarail.com

TICKET INFORMATION

Monthly Pass: Save over 30%. Good for unlimited travel between the fare zones indicated on the ticket during a calendar month. The pass is for the exclusive use of the purchaser and is not transferable.

10-Ride Ticket: Occasional commuters or recreational travelers save 15% off one-way fares. One 10-Ride can be shared by people riding together. Ticket is valid one year from date of purchase.

One Way Ticket: Good for one-way travel between the fare zones indicated on the ticket. Valid for one year from date of purchase.

Weekend Pass: Offers unlimited rides on both Saturday and Sunday.

Pace PlusBus: Monthly pass holders can purchase a Pace PlusBus sticker for unlimited travel on all Pace suburban buses. Pace buses connect with Metra trains at many stations.

Link-Up: Monthly pass holders can purchase a Link-Up sticker for connecting travel on CTA and Pace buses. CTA usage is restricted to A.M. and P.M. weekday rush hours.

Family Fares: Allow up to 3 children age 11 and under to ride FREE with a fare-paying adult on weekends and holidays.

Young Adult Fares: On weekends and holidays, youngsters 12 to 17 years of age ride for half fare.

Children's Weekday Fares: Allow children 6 and under to ride free when accompanied by a fare-paying adult (up to 3 children free per adult); children 7-11 save 50% over one-way fares.

Seniors Ride Free Program: Senior Citizens, 65 or older and living in the six-county region of Cook, DuPage, Kane, Lake, McHenry or Will are eligible to ride free by presenting their RTA-issued Reduced Fare Permit to the on-board personnel.

Disability/Senior Citizen Fares: Customers with Disabilities who have an RTA-issued Reduced Fare Permit are eligible for a reduced fare ticket. If you are enrolled in the Illinois Circuit Breaker Program and have a RTA Issued Circuit Permit, you are eligible to ride free. Seniors, who are ineligible for the Seniors Ride Free Program due to residency restrictions are still eligible for a reduced fare by presenting their Reduced Fare Permit or Medicare Card.

Printing paid for in part by Chase



transitchicago.com

TYPE OF FARE*

CASH FARE: Accepted on buses only. Exact fare (both coins and bills accepted). No cash transfers available.

CHICAGO CARD® AND CHICAGO CARD PLUS®: Buy Chicago Card and Chicago Card Plus online at chicago-card.com. Call 1-888-YOUR-CTA (1-888-968-7282); TTY: 1-888-CTA-TTY1 (1-888-282-8891) for more information. Chicago Card and Chicago Card Plus cards are valid on CTA and Pace. Transfers must occur within two hours of first ride. A \$5 purchase fee applies. The fee is waived for first-time users who register their cards.

TRANSIT CARD: Deducts fares and transfers on CTA and Pace. Transfers must occur within two hours of first ride. Can pay for up to 7 full-fare rides at once. Add value at rail station farecard machines. Maximum card value is \$100. Buy full-fare Transit Cards (\$2 to \$100) at rail station farecard machines. Buy pre-valued, full-fare Transit Cards at select Currency Exchanges, Jewel and Dominick's food stores, CVS Pharmacies, and at transitchicago.com for \$10 or \$20.

REDUCED FARE TRANSIT CARD PACKS: Buy at select Currency Exchanges, Jewel and Dominick's food stores, CVS Pharmacies, and at transitchicago.com. Add value at station farecard machines.

PASSES: Offer unlimited rides when activated with first use. Buy at select Currency Exchanges, Jewel and Dominick's food stores, CVS Pharmacies, and at transitchicago.com. Cannot be shared or recharged. 30-day passes are valid on CTA and Pace.

LINK-UP PASS (STICKER OR FARECARD AVAILABLE): Valid weekdays on CTA (6 a.m.-9:30 a.m., and 3:30 p.m.-7 p.m.) and on Pace (any time). Sold by Metra; use with Metra monthly ticket.

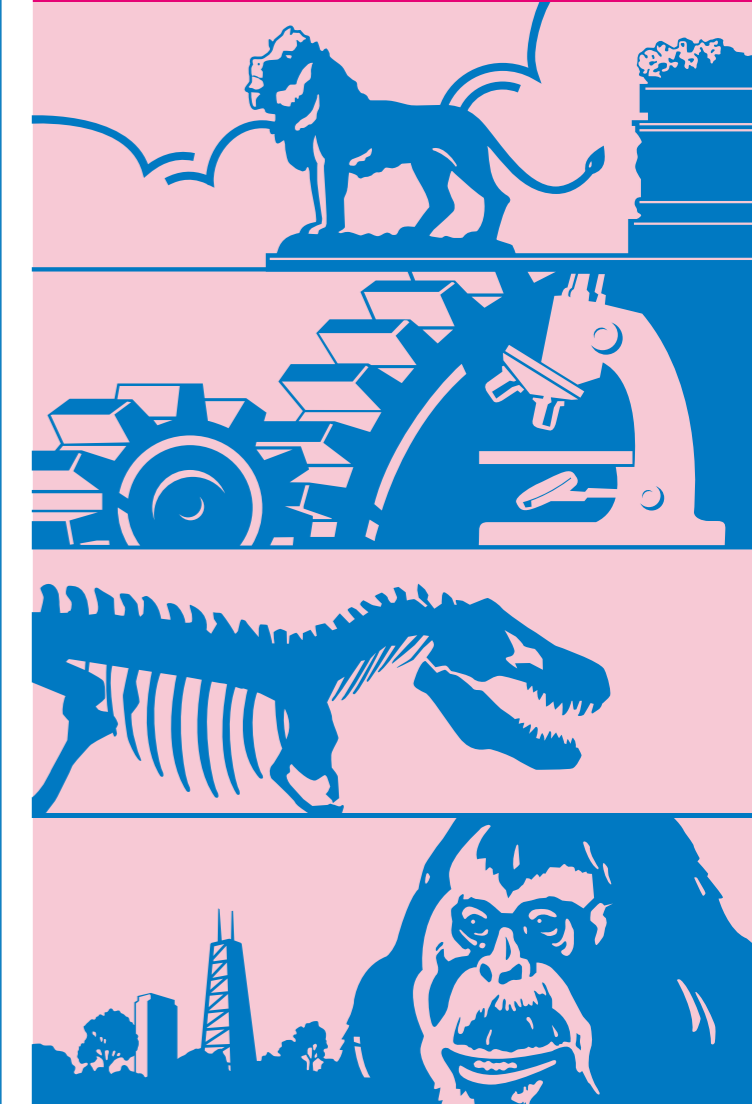
128 SOLDIER FIELD EXPRESS \$1 (dollar bill or coins only) 50¢

154 WRIGLEY FIELD EXPRESS \$6 per carload, including round-trip bus & parking

* CTA farecards and passes can also be purchased in person at the CTA Sales Center, 567 W. Lake (Chicago), 2nd floor.

** 7-Day CTA/Pace Pass valid on CTA and Pace non-premium/subscription routes.

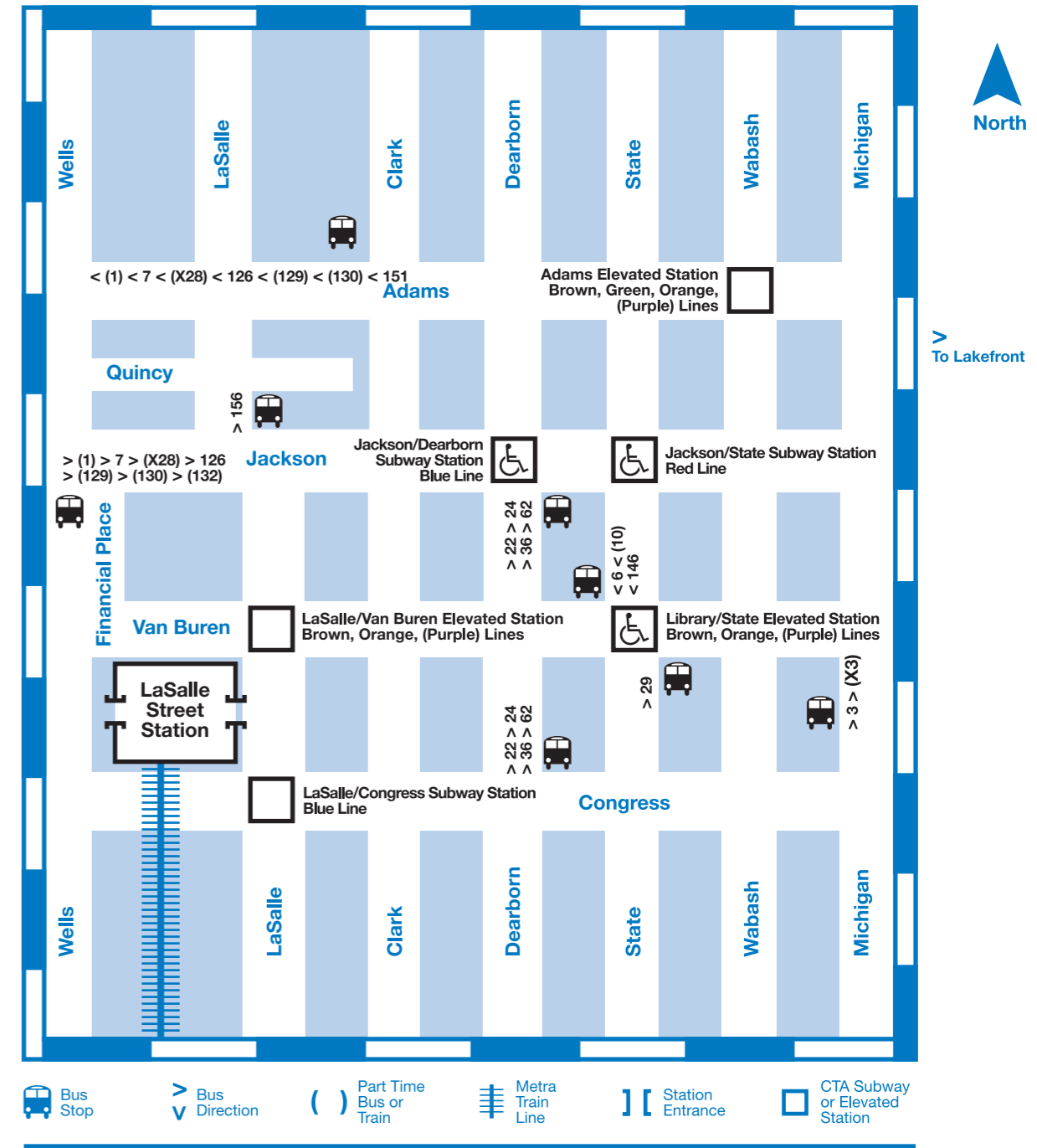
YOU HAVE CONNECTIONS IN CHICAGO
LaSalle Street Station Travel Guide



Orange Line train from LaSalle/Van Buren elevated station to Midway . This brochure shows CTA bus and train connections from Metra's LaSalle Street station to major destinations. Directions can be used daily, unless noted. Services run every 5 to 15 minutes. See time chart for approximate service hours. All CTA buses are accessible.

ATTRACTION	DIRECTIONS
Adler Planetarium	Daily, Memorial Day weekend thru Labor Day: 130 east on Jackson at Financial Pl. Other times: 146 south on State at Van Buren.
Art Institute	1, 7, 126 or 130 east on Jackson at Financial Pl. Exit at Wabash. Walk 1 block east and 1 block north.
Briar St. Theater's Blue Man Group	Brown Line train from LaSalle/Van Buren elevated station to Belmont. Walk 2 blocks east on Belmont to Halsted.
Chicago Architecture Foundation	Walk east on Jackson to Michigan.
Chicago Board of Trade	Across the street from station (on Van Buren).
Chicago Board Options Exchange	In LaSalle St. station/Financial Place complex.
Chicago Cultural Center and Visitor Information Center	Brown Line train from LaSalle/Van Buren elevated station to Randolph station.
Chicago History Museum	22 or 36 north on Dearborn at Jackson; exit at North Ave.
Chicago-Kent College of Law (IIT)	Walk 2 blocks north to Adams, then 5 blocks west on Adams to Clinton.
Chicago Mercantile Exchange	Orange, Pink or Purple Line train from LaSalle/Van Buren elevated station to Washington ; then walk 2 blocks west on Madison.
Chicago Stock Exchange	In LaSalle St. station/Financial Place complex.
City Hall/County Building	Blue Line train from LaSalle/Congress subway station to Washington.
Civic Opera House	See directions for Chicago Mercantile Exchange.
Columbia College	1, 7, X28, 126 or 130 east on Jackson at Financial Pl.; exit at Harrison.
Daley Center	Blue Line train from LaSalle/Congress subway station to Washington.
DePaul University (downtown)	Walk 4 blocks east on Van Buren to State.
DePaul University (main campus)	Brown Line train at LaSalle/Van Buren elevated station; exit at Fullerton.
Federal Buildings	Walk 2 blocks east on Van Buren to Dearborn then 1 block north on Dearborn.
Field Museum of Natural History	See directions for Adler Planetarium.
Grant Park Festivals/Taste of Chicago	Walk east on Jackson into Grant Park.
Greyhound Bus Station	Blue Line train from LaSalle/Congress subway station to Clinton. Walk 1 block south and 1 block west.
Harold Washington Library	Walk 3 blocks east on Van Buren to State.
Harris Music & Dance Theater	Walk north 3 blocks on LaSalle to Monroe; then 151 east on Monroe at LaSalle; exit at Randolph.
Illinois Center Area	Walk 3 blocks north on LaSalle to Monroe; then 151 east on Monroe at LaSalle; exit at South Water.
John Hancock Center	Walk 3 blocks north on LaSalle to Monroe; then 151 east on Monroe at LaSalle; exit at Chestnut.
John Marshall Law School	Walk 2 blocks east on Van Buren to Dearborn.
Lincoln Park Zoo/Conservatory	Walk 3 blocks north on LaSalle to Monroe; then 151 east on Monroe at LaSalle exit at Webster.
Loyola University (downtown)	Walk 3 blocks east on Jackson to State Street subway; then Red Line train marked "Howard" to Chicago .
McCormick Place	Weekday AM rush: 129 east on Jackson at Financial Pl. Other times: Walk 5 blocks east on Van Buren to Michigan; then 3, X3 or X4 south on Michigan to McCormick Pl.
Merchandise Mart	Brown Line train from LaSalle/Van Buren elevated station to Mart .

ATTRACTION	DIRECTIONS
Michigan Ave. Shopping	Walk 3 blocks east on Van Buren to State; then 10, 144, 145, 146, 147 or 148 north on State.
Midway Airport	Orange Line train from LaSalle/Van Buren elevated station to Midway .
Millennium Park Concerts	151 east on Monroe at LaSalle; exit at Washington/Michigan.
Museum of Contemporary Art	See directions for Water Tower Place.
Museum of Contemporary Photography	1, 7, X28, 126, 129 or 132 on Jackson at Financial Pl.; exit at Harrison.
Museum of Science of Industry	Weekday rush periods: X28 east on Jackson at Financial Pl. Other times: 6 or 10 south on State at Van Buren.
Nature Museum	Walk 3 blocks north on LaSalle to Monroe. 151 east on Monroe at LaSalle; exit at Fullerton.
Navy Pier/Shakespeare Theater/Chicago Children's Museum	Walk 3 blocks east on Van Buren to State; then 29 north on State to Navy Pier.
Newberry Research Library	Walk 2 blocks east on Van Buren to Dearborn; then 22 or 36 north on Dearborn; exit at Walton (from 36 walk 1 block west).
Northwestern Memorial Hospital/Northwestern University (downtown)	Walk 3 blocks east on Van Buren to State, then 10, 144, 145, 146, 147 or 148 north on State; exit at Huron.
O'Hare Airport	Blue Line train from LaSalle/Congress subway station marked "O'Hare".
Ogilvie Transportation Center (Metra Station)	Orange, Pink or Purple Line train from LaSalle/Van Buren elevated station to Washington ; then any bus west on Madison to Canal or Clinton.
Randolph St. Theater District	Any bus north on Dearborn; exit at Randolph.
River North Entertainment Area	Walk 2 blocks east on Van Buren to Dearborn, then 22 or 36 north on Dearborn. Exit at Ontario.
Robert Morris University	Walk 3 blocks east on Van Buren to State.
Roosevelt University	1,7,X28,126,129 or 132 east on Jackson; exit at Congress.
Shedd Aquarium/Oceanarium	See directions for Adler Planetarium.
Siskel Film Center	Brown Line train from LaSalle/Van Buren elevated station to State/Lake.
Sightseeing Boats	See directions for U of C Gleacher Center.
Soldier Field	See directions for Adler Planetarium.
State of Illinois (Thompson) Center	Blue Line train from LaSalle/Congress subway station to Clark/Lake.
State Street Shopping	Walk 3 blocks east on Jackson to State, then north on State.
Symphony Center	Walk 5 blocks east on Jackson to Michigan.
United Center	Walk 4 blocks north on Wells to Madison, then 19 or 20 west on Madison.
U of C Gleacher Center	Walk 3 blocks east on Van Buren to State, then 10, 144, 145, 146, 147, or 148 north on State. Exit at Tribune Tower.
U.S. Cellular Field	Walk 3 blocks east on Van Buren to State Street subway then Red Line train (under State) marked "95th" to Sox-35th .
Water Tower Place/Chicago Waterworks Visitor Info Center	Walk 3 blocks north on LaSalle to Monroe 151 east on Monroe at LaSalle; exit at Chestnut.
Willis (Sears) Tower	Walk 2 blocks west on Jackson.
Wrigley Field	Walk 3 blocks east on Van Buren to State Street subway then Red Line train marked "Howard" to Addison station.



- **Blue Line** trains (LaSalle/Congress subway) and **Red Line** trains (Jackson/State subway) run at all times.
- **Brown Line** trains (LaSalle/Van Buren elevated) run weekdays/Saturday 5:00am–1:00am; Sundays/holidays 7:15am–12:15am.
- **Orange Line** trains (LaSalle/Van Buren elevated) run weekdays 4:20am–1:15am; Saturdays 4:50am–1:15am; Sundays/holidays 5:50am–11:50pm.
- **Purple Line Express** trains (LaSalle/Van Buren elevated) run weekdays 6:10am–10:15am and 3:20pm–7:15pm.

TRANSIT CARDS ARE AVAILABLE FROM THE CTA VENDING MACHINES LOCATED IN THE METRA TICKET OFFICE